

Shinkon®



Highly effective foliar, stem and tuber blight control

Proven and reliable in Europe-wide trials

Ultimate flexibility and performance within a blight programme

Excellent zoospore control and tuber protection

Gowan®

Crop Protection Ltd.

Shinkon® contains amisulbrom.

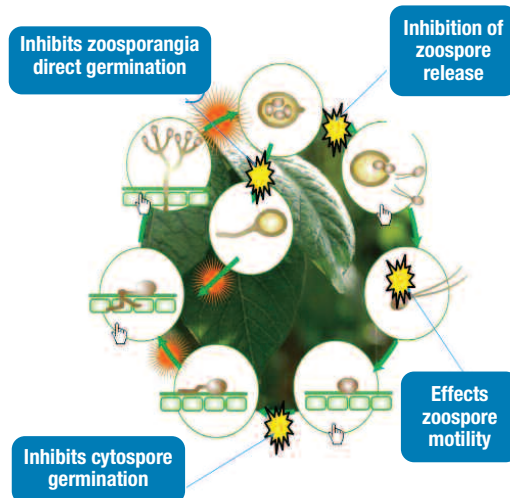
Shinkon® is a registered trademark of Nissan Chemical Industries, Ltd., Japan
Use plant protection products safely.

Always read the label and product information before use

Shinkon – offers the ultimate flexibility and performance when used within a blight control programme

Highly effective foliar, stem and tuber blight control

Shinkon is effective at multiple stages within the blight lifecycle protecting crops throughout the season.



Shinkon in combination with mancozeb has one of Euroblight's highest ratings for potato blight control and can be integrated into any blight programme alongside other fungicide partners from crops starting to meet within the rows.

Shinkon provides excellent control of tuber blight, not only stopping the release of zoospores **Shinkon** also affects zoospore motility within the soil preventing tuber infection.

Reliable and flexible for use throughout the programme

Shinkon is rapidly absorbed into the leaf cuticle where it stays, inhibiting spore germination and providing excellent control of leaf and stem blight.

Shinkon can offer tank-mix flexibility within the programme to further tailor the requirement for disease control to the time of application.

Excellent tuber protection

With its anti-sporulant activity and effect on swimming zoospores **Shinkon** provides excellent tuber blight protection.

Used at the very beginning and end of the season **Shinkon's** activity on zoospores will help prevent tubers from becoming infected.



Any spores washed down from the leaves towards the tubers are controlled by **Shinkon**, keeping tubers clean and healthy for storage.

Application timing for Shinkon

Shinkon is a highly effective addition to a season long blight programme in mix with complimentary actives.

Exhibiting excellent control of tuber blight **Shinkon** can be used alone at the end of the programme.

Use a maximum of three consecutive applications.



About Shinkon®

Shinkon is a suspension concentrate containing 200 g/l amisulbrom

Crops:	All varieties of Potato
Target:	Potato Leaf Blight (<i>Phytophthora infestans</i>)
Timing:	Preventatively as part of a late blight control programme from when crops meet along the rows
Dose rate:	0.5 Lt/ha
Water rate:	200-500 Lt water/ha
Spray quality:	MEDIUM
Spray intervals:	7 or 10 days, depending on risk
Maximum number of treatments:	6 per crop
Latest time of Application:	7 days before harvest
Buffer zone:	LERAP B
Pack size:	5 Litres

Your Gowan contacts:

Hank King tel: 07867 353981
UK and Ireland Business Manager

Erin Matlock tel: 07458 130541
UK and Ireland Development Manager

www.uk.gowanco.com

Gowan®

Crop Protection Ltd.

Gowan Crop Protection Ltd
Innovation Hub, West Common, Harpenden
Hertfordshire AL5 2JQ